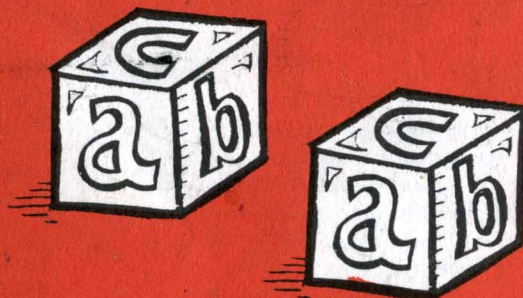
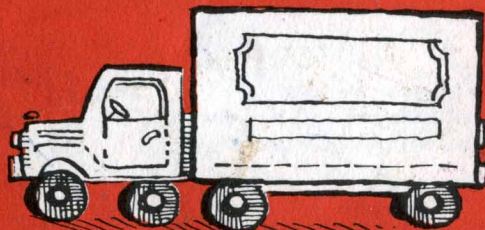


TEACHERS EDITION



545dn  
wurkbok  
to accompany  
dinosaur ben  
PERRY



Early-to-Read itla Program  
REVISED EDITION

ALBERT J. MAZURKIEWICZ, Ed.D.  
Newark State College  
HAROLD J. TANYZER, Ph.D.  
Hofstra University  
Illustrated by Allen Shapiro

itla PUBLICATIONS, INC.



The Initial Teaching Alphabet Foundation, an independent organization chartered as a nonprofit educational foundation in the State of New York, certifies that this book uses the characters as designed by Sir James Pitman and the spelling rules he developed.

Copyright© 1963, 1965

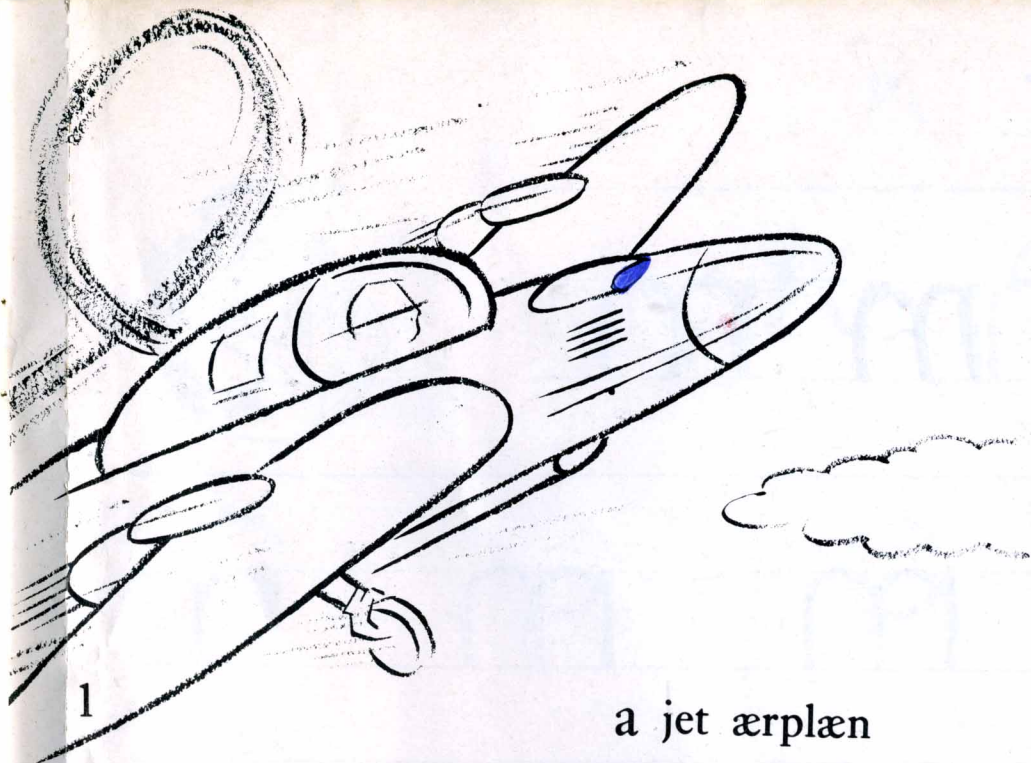
Initial Teaching Alphabet Publications, Inc.  
6 East 43rd Street, New York City, N. Y. 10017

All rights reserved. No part of this book may be reproduced in any form without the written permission of the publishers.

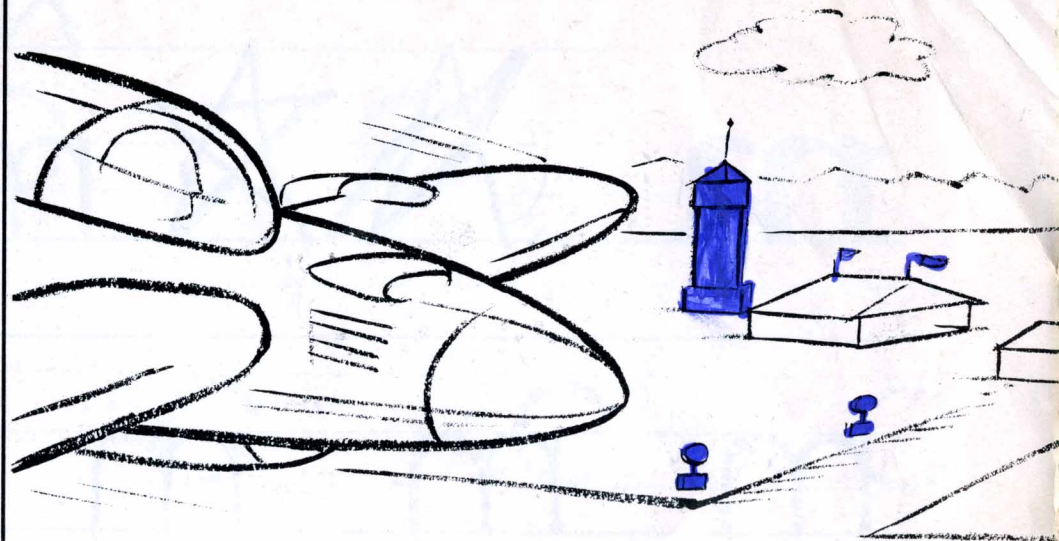
Printed in the United States of America

**i|t|a** INITIAL TEACHING ALPHABET PUBLICATIONS, INC.  
Publishers of Educational Materials  
in Pitman's Initial Teaching Alphabet and in the Regular Alphabet  
New York • London • Toronto

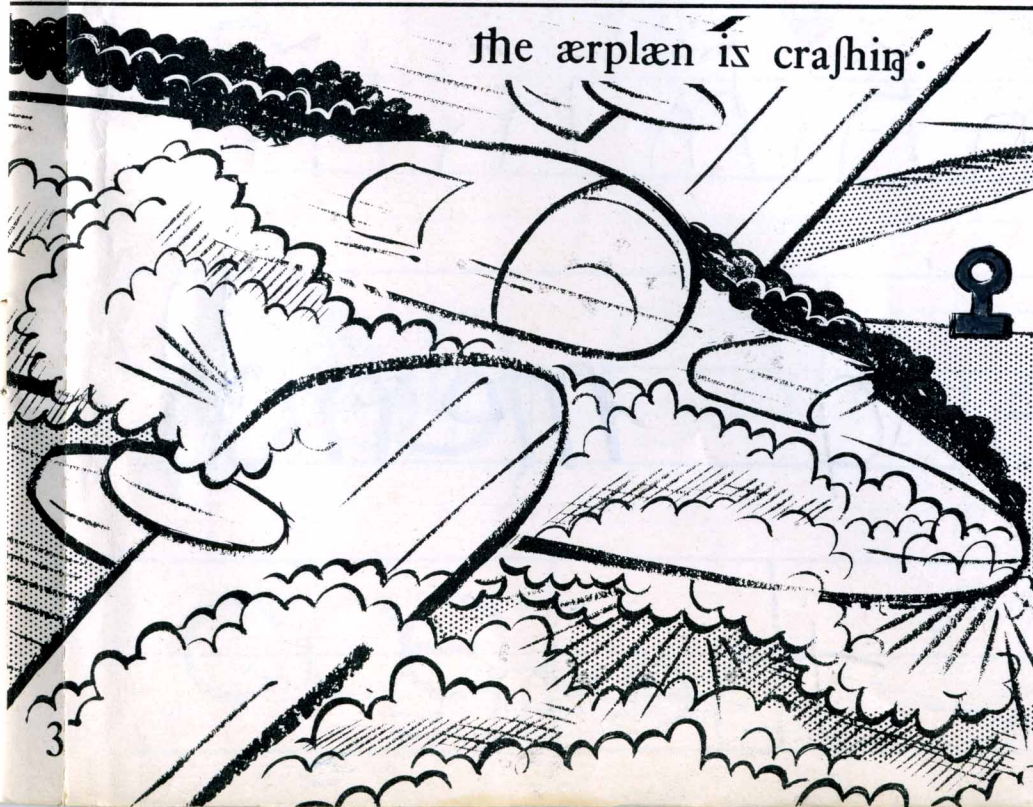




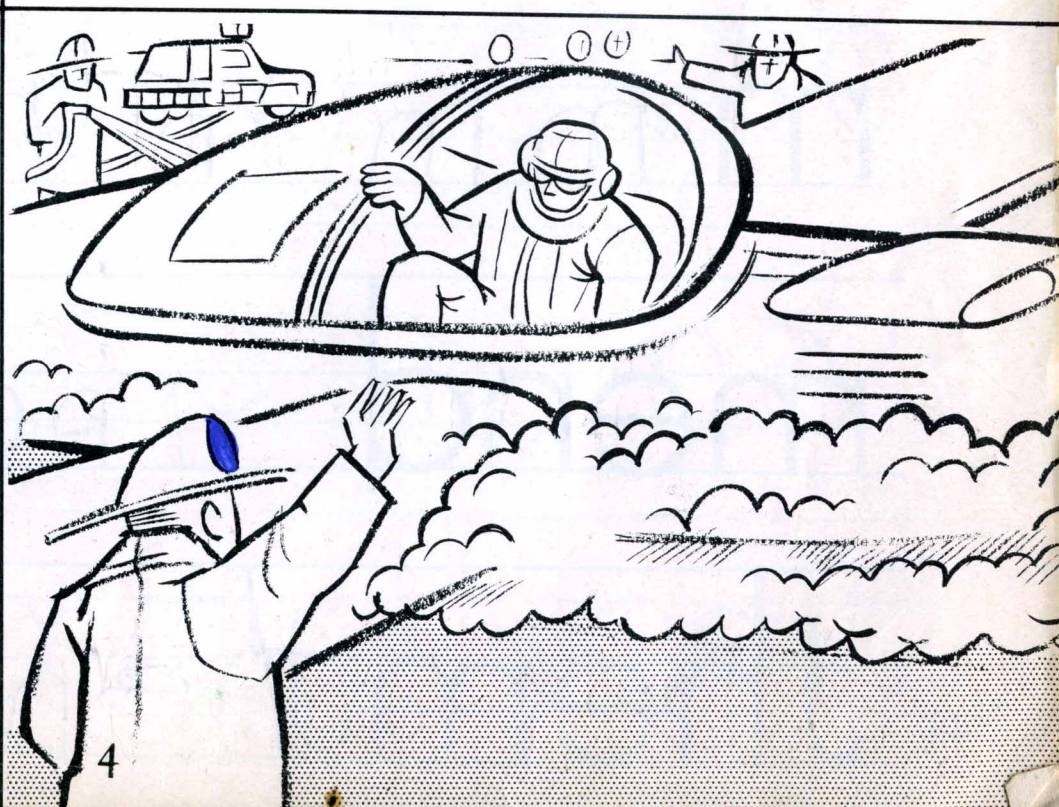
a jet ærplæn



the jet is landing.

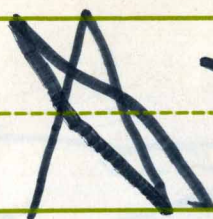


the ærplæn is crashing.





m



mm



m

m

m

m

m

m

m

m

m

m

m

m

m

m

m

mend

mend

mend

them

them

them

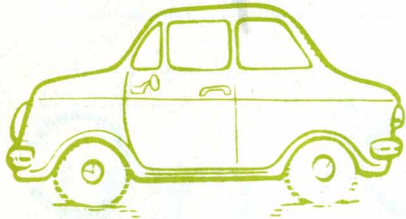




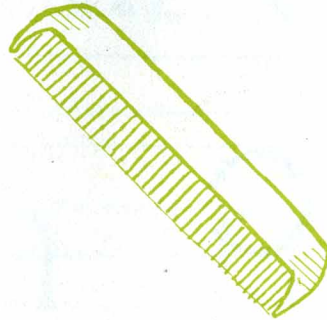


C

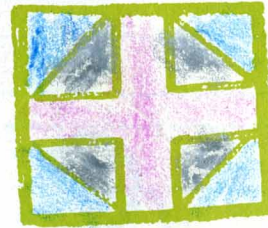
Susan Sue  
riet c in eech wurd. reed the wurd.



Car



Coem



Cross



Coet



Candl



Cork



Crab



Corn





-3



which wurdz mæk sens in eēh sentens?  
copy the wurdz on the riet lien.

~~ten red~~

~~the cat~~

~~is a toed~~

~~not rest~~

~~in the tent~~

✓ the cat ran on the roed.

✓ ben sed, "ie can not rest"

✓ ed sed, "that is a toed"

✓ let us plæ in the tent.

✓ thær ar ten red appls.



Very Good work Susie



fill in the missing characters.

a a e e l æ th s



that man ret a noet.

ann can rest in the bed.

His is a boet. thoes

ar indians with arroes.

Let us plæ in the hous.



Very Good

Werk

Susie penrod



Sulsk

ilja INITIAL TEACHING ALPHABET PUBLICATIONS, INC.  
Publishers of Educational Materials in the Regular Alphabet  
and in Pitman's Initial Teaching Alphabet

Reorder number 9-523